



PUMP:

Hayward Gordon XCS Screw Centrifugal Pumps

INDUSTRY:

Mining – Potash

APPLICATION:

Brine with Clay and Slimes (50% solids) Transfer Pump

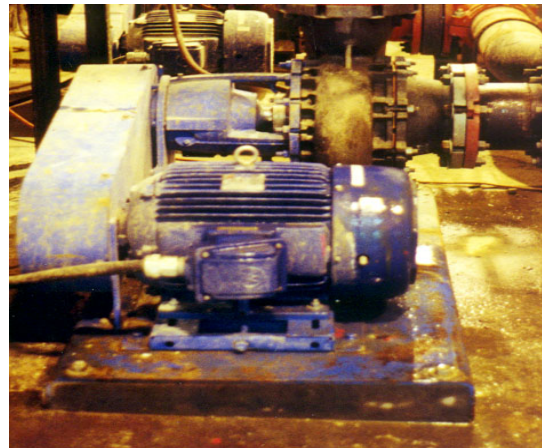
PROBLEM

A New Mexico potash mine was experiencing premature wear of their hard metal slurry pumps on a 50% solids brine/clay/slimes transfer application.

The hydraulic conditions were such that the flow was fairly high with very little pressure upon the pump. In order to keep the pumps operating in a stable condition the mine was forced to restrict the pumps discharge flow by putting a false pressure upon it. This resulted in a great deal of internal recirculation that resulted in the pumps wearing out every 6 months! In addition they were consuming a lot of unnecessary power due to the added pressure upon the pump.

SOLUTION

The Hayward Gordon XCS screw centrifugal pump was presented as the ideal pump for this service. The high efficiency hydraulic performance of this design fit perfectly with the operating conditions and the available hard metal hi-chrome construction would ensure that it could stand up to the high solids content and mildly corrosive slurry.



RESULTS

In 2007 Hayward Gordon supplied an XCS4-A pump c/w hard metal hi-chrome impeller and adjustable suction liner.

This pump has required no spare parts replacement and is consuming much less power. The client is so happy with the performance that they have purchased several additional units.

APPLICATION SOURCE

Hayward Gordon– Vancouver