



# Hayward Gordon

Pumps • Mixers • Engineered Systems and Controls

## Autoclave Agitators

In the late 1960's, Hayward Gordon was involved in the first commercial copper pressure leach circuit. This provided a capability that has subsequently led to many mixer installations for high pressure, high temperature oxidation, leach and reduction autoclaves.

With installations in all of these processes, Hayward Gordon has established itself as a market leader in high pressure mineral extraction.

Hayward Gordon partners with our customer to develop customized solutions for these highly demanding applications.



### Applications

- Gold
- Zinc
- Uranium
- Nickel
- Cobalt
- Graphite
- Copper

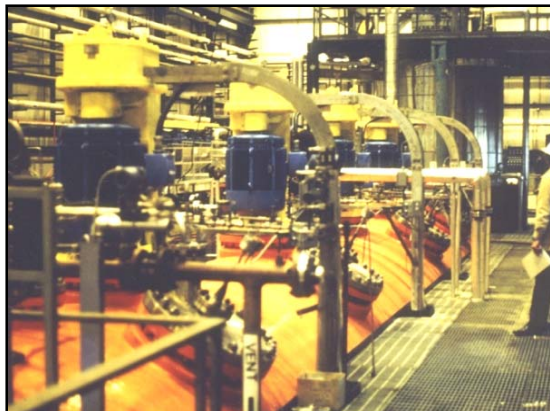
- Reduction
- Oxidation
- Acid Leach
- Precipitation

### Materials of Construction

- Titanium, Gr. 2, 5 & 12
- Hastelloy C-276
- 904L SS
- Duplex 2205
- Ferralium 255
- 316 SS
- Inconel 625
- Incoloy 825



McKay 48 Hard Facing Weld Overlay on Blade Edges for Abrasion Protection





# Hayward Gordon

Pumps • Mixers • Engineered Systems and Controls

## Autoclave Installation List

| HG Ref.  | Model        | Customer               | Wet-End Material of Construction | Application    | Qty | HP    |
|----------|--------------|------------------------|----------------------------------|----------------|-----|-------|
| 50583    | MNP-600-826  | INCO                   | 316 ss                           | Copper Leach   | 3   | 60    |
| 73378    | 10HTN-150    | INCO                   | 316 ss                           | Copper Leach   | 3   | 150   |
| 203410   | PTEMH-24     | Kidd Creek             | 904L ss / Titanium               | Zinc Leach     | 5   | 125   |
| 208353   | 3809s-PTM    | Key Lake               | Rubber Covered Carbon Stl        | Uranium Leach  | 10  | 50    |
| 232282/3 | 3805s-PTM    | Cominco                | Duplex 2205 / Incoloy 825        | Copper Leach   | 6   | 15-25 |
| 221522   | MTE-210s-PTM | Sherritt International | 316 ss                           | Ni/Co Leach    | 1   | 75    |
| 227857   | MTE-210s-PTM | Sherritt International | 316 ss                           | Ni/Co Leach    | 3   | 75    |
| 238746   | MTE-210s-PTM | Sherritt International | 316 ss                           | Ni/Co Leach    | 4   | 75    |
| 256494   | MTE-210s-PTM | Sherritt International | 316 ss                           | Ni/Co Leach    | 1   | 75    |
| 256493   | MTE-210s-PTM | Sherritt International | 316 ss                           | Ni/Co Leach    | 3   | 100   |
| 252596   | MTE-170s-PTM | Sherritt International | 316 ss                           | Ni/Co Leach    | 3   | 75    |
| 267275   | MTE-210s-PTM | Sherritt International | 316 ss                           | Ni/Co Leach    | 1   | 75    |
| 267276   | MTE-210s-PTM | Sherritt International | 316 ss                           | Ni/Co Leach    | 3   | 100   |
| 220570   | BTM-300-407  | Sherritt International | 316 ss                           | Nickel RedN    | 4   | 30    |
| 265327   | BTM-500-407  | Sherritt International | 316 ss                           | Nickel RedN    | 3   | 50    |
| 253298   | BTM-300-407  | Sherritt International | 316 ss                           | Nickel RedN    | 4   | 30    |
| 263464   | BTM-300-407  | Sherritt International | 316 ss                           | Nickel RedN    | 1   | 30    |
| 268330   | BTM-1500-505 | Sherritt International | 316 ss                           | Nickel RedN    | 4   | 150   |
| 272274   | BTM-600-607  | Sherritt International | 316 ss                           | Nickel RedN    | 4   | 60    |
| 250782   | 3809s-PTM    | Nerco Con Mines        | Alloy 255/Titanium/Ceramic       | Gold Oxidation | 5   | 75    |
| 253058/9 | MTE-250s-PTM | HBMS                   | 904L ss / Titanium               | Zinc Leach     | 15  | 150   |
| 261952   | HRFM-50-820  | Victoria Graphite      | 316 ss                           | Graphite       | 1   | 5     |
| 262466   | 3805s-PTM    | EGO Resources          | Inconel 625                      | Cobalt Leach   | 1   | 25    |
| 272112   | 3835s-PTM    | Gresik Copper          | 904L ss                          | Copper Leach   | 2   | 30    |
| 281783   | BTM-75-104   | The Westaim Corp.      | 316 ss                           | Nickel RedN    | 4   | 7.5   |
| 283305   | MBM-55       | PKC Copper             | 904L ss                          | Copper Leach   | 1   | 30    |
| 284961   | BTM-30-404   | The Westaim Corp.      | 316 ss                           | Nickel RedN    | 6   | 30    |
| 285348   | BTM-30-404   | The Westaim Corp.      | 316 ss                           | Nickel RedN    | 1   | 30    |
| 292811   | BTM-20-027   | The Westaim Corp.      | 316 ss                           | Nickel RedN    | 1   | 2     |
| 295857   | HDM-210      | Moa Nickel             | Hastelloy C-276                  | Nickel PPT     | 1   | 60    |
| 300402   | HDM-210      | Moa Nickel             | Hastelloy C-276                  | Nickel PPT     | 3   | 60    |
| 309078   | HDM-210      | Moa Nickel             | Hastelloy C-276                  | Nickel PPT     | 1   | 60    |
| 311356   | BTM-750-455  | Ambatovy (On Order)    | 316 ss                           | Cobalt RedN    | 12  | 75    |
| 311357   | BTM-2140-600 | Ambatovy (On Order)    | 316 ss                           | Nickel RedN    | 28  | 214   |
| 311358   | BTM-2000-600 | Ambatovy (On Order)    | Zeron 100                        | Nickel Leach   | 6   | 200   |
| 311360   | HDM-170      | Ambatovy (On Order)    | Zeron 100                        | Nickel Leach   | 4   | 60    |
| 311451   | HDM-170      | Sherritt International | 316 ss                           | Ni/Co Leach    | 6   | 50    |
| 311457   | HDM-210      | Sherritt International | 316 ss                           | Ni/Co Leach    | 3   | 125   |
| 311452   | HDM-210      | Sherritt International | 316 ss                           | Ni/Co Leach    | 7   | 75    |
| 310978   | BTM-1500-505 | Sherritt International | 316 ss                           | Nickel RedN    | 8   | 150   |
| 310979   | BTM-600-607  | Sherritt International | 316 ss                           | Cobalt RedN    | 4   | 60    |



Hayward Gordon Ltd.  
5 Brigden Gate  
Halton Hills, ON  
L7G 0A3

Ph: 905-693-8595  
Fax: 905-693-1452  
Email: [mixers@haywardgordon.com](mailto:mixers@haywardgordon.com)  
Web: [www.haywardgordon.com](http://www.haywardgordon.com)